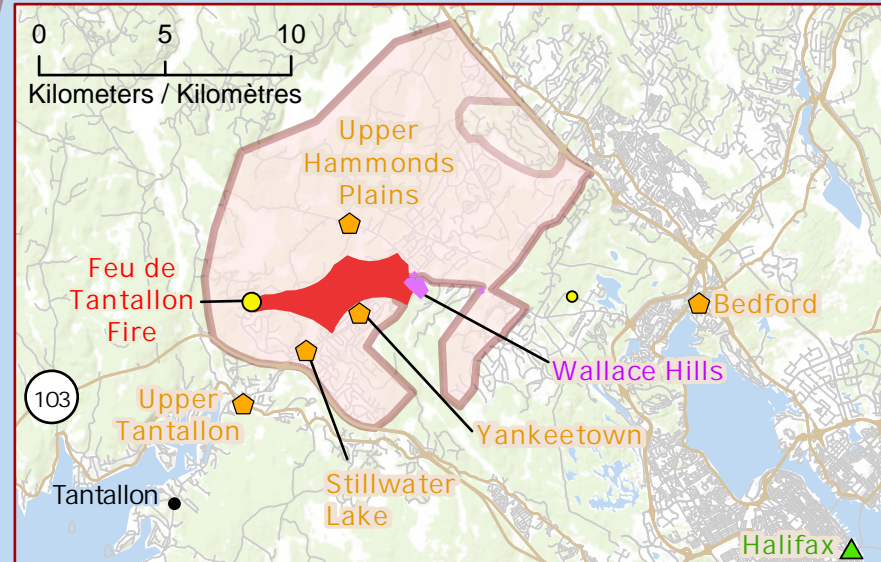
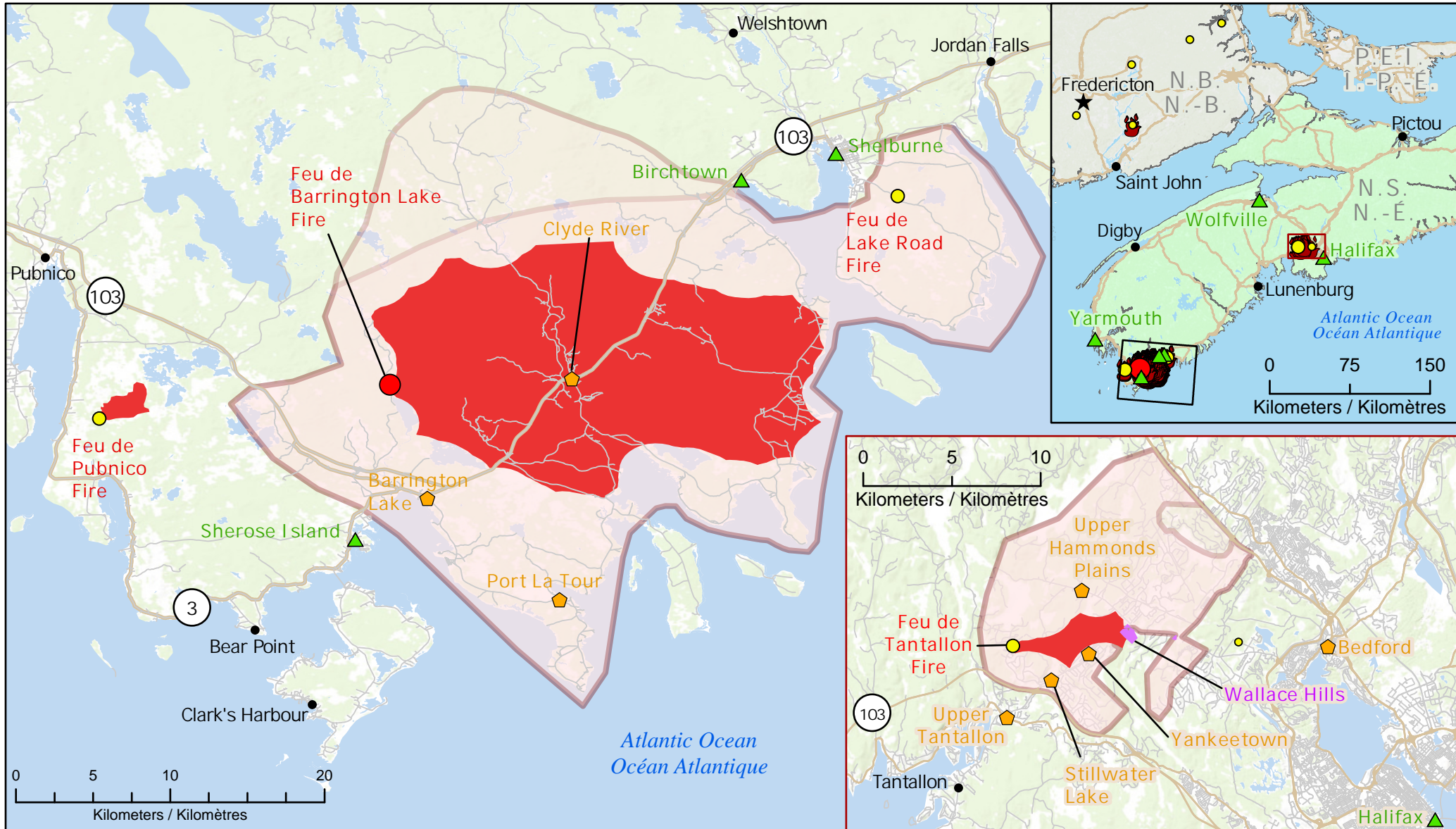


**Wildfires of interest in Nova Scotia
 Feux de forêt d'intérêt en Nouvelle-Écosse**



● City / Ville	★ Capital / Capitale	🏠 Community with evacuations Communauté avec évacuations	🏡 Host Community / Communauté d'accueil	🛣 Highway / Autoroute	🔥 Fire Hotspots - Last 7 Days (CWFIS) / Points chauds d'incendie - 7 derniers jours (SCIFV)	🔴 Fire Perimeter / Périmètre du feu	📀 Evacuation area / Zone d'évacuation	🏞 First Nations Reserve Réserve des Premières Nations	Out of Control Hors contrôle	● 1 - 100 Hectares	● 100 - 999 Hectares	● > 1000 Hectares	Being Held Contenu	● 1 - 100 Hectares	● 100 - 999 Hectares	● > 1000 Hectares	Under Control Maîtrisé	● 1 - 100 Hectares	● 100 - 999 Hectares	● > 1000 Hectares
----------------	----------------------	---	---	-----------------------	---	-------------------------------------	---------------------------------------	--	---	--------------------	----------------------	-------------------	-------------------------------	--------------------	----------------------	-------------------	-----------------------------------	--------------------	----------------------	-------------------



Map data sources
 Sources des données
 GOC-COG, DMTI Spatial, DNRR NS
 Transport Canada-Transports Canada, CWFIS, ESRI